

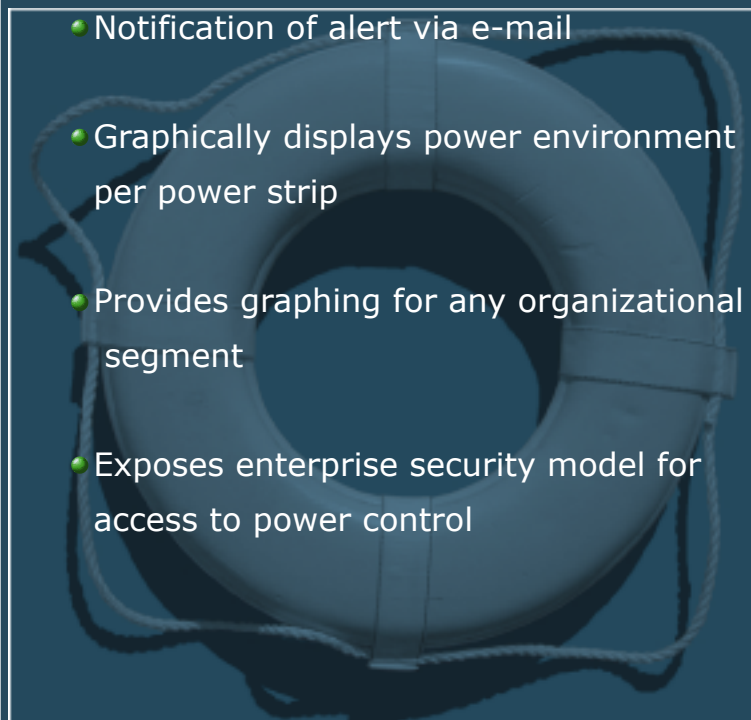


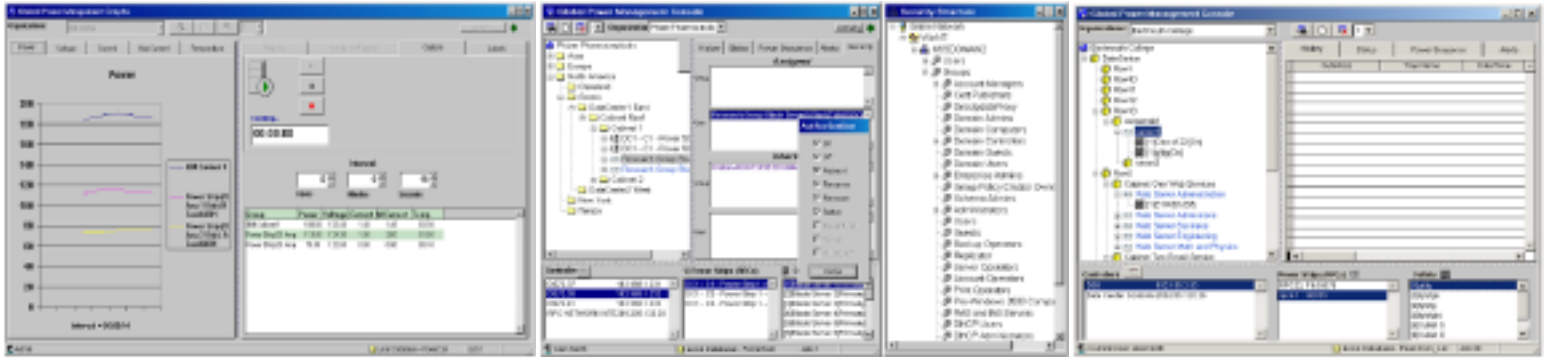
Monitor and control BayTech power equipment from a single user-friendly interface

GPM (Global Power Management) has made it easier than ever to manage, control, and receive alert notifications from an installed BayTech power strip base. An advanced user interface provides power and simplicity in every aspect of power strip control. Graphing, reporting, alarm condition notification, click through control of core power strip functionality, and automatic discovery of power strip units make GPM the complete solution for managing BayTech's power strips.

- Discovers BayTech devices on existing subnets
- Build logical and functional views of power strips in remote locations
- Supports equipment with single or redundant power supplies
- Provides easy "click through" control of power strips anywhere
- Displays alerts for all or individual power strips

- Notification of alert via e-mail
- Graphically displays power environment per power strip
- Provides graphing for any organizational segment
- Exposes enterprise security model for access to power control





Power Utilization over Time

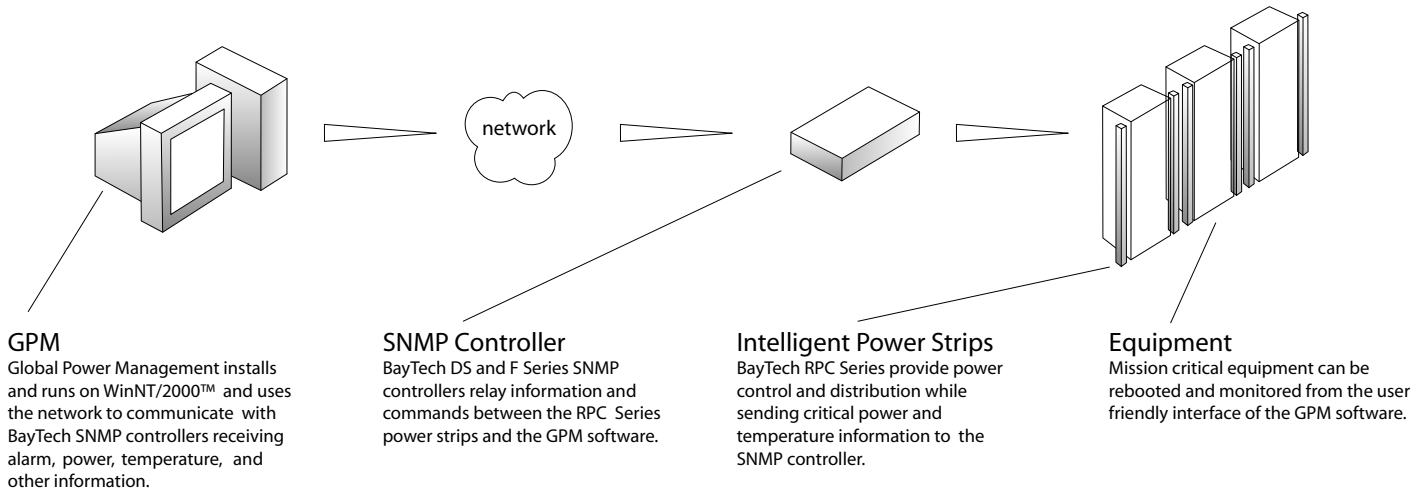
Graph power, voltage, current, maximum current and temperature over a specified time interval. Great for detecting power and temperature trends within any segment of the data center or organization.

Expose Enterprise Security and Control Access.

WinNT/2000™ Domains are exposed to the power infrastructure. Administrators can drag users or groups to any level within the organizational structure. Users and groups can be assigned specific operations.

Build Logical Views of Power Strips in Remote Locations

Tree View shows a logical or functional view of a data center. Equipment can be grouped in multiple ways simultaneously.



GPM
Global Power Management installs and runs on WinNT/2000™ and uses the network to communicate with BayTech SNMP controllers receiving alarm, power, temperature, and other information.

SNMP Controller
BayTech DS and F Series SNMP controllers relay information and commands between the RPC Series power strips and the GPM software.

Intelligent Power Strips
BayTech RPC Series provide power control and distribution while sending critical power and temperature information to the SNMP controller.

Equipment
Mission critical equipment can be rebooted and monitored from the user friendly interface of the GPM software.

Alerts are Customized Based on Preset Conditions

Customize alert messages, thresholds, e-mail addresses for alert notifications, alarm text, trap names and more.

Automatic Discovery

Discover BayTech SNMP controllers on the same sub net automatically, or enter in the IP of remote controllers.

Status Screen for Discovered BayTech Controllers

The status screen provides a snap shot of all BayTech power solutions. Controllers, power strips and outlets are displayed. On/off, reboot and status functions are supported by a simple right click of the mouse.

Supports Equipment with Single or Redundant Power Supplies

Support redundant power sources. Assign multiple receptacles to any device. Simply drag discovered receptacles from outlet list to device name.

Power Sequence any Supplies on any Device

GPM allows you to sequence power supplies in any order. Delays can be set between operations.

Provides easy Click Through control of power strip's anywhere

Simply right click on defined equipment and you have the options) to turn on/off or reboot the equipment.

Displays Alerts for All or Individual Strips

The alerts view displays all SNMP traps received for all controllers monitored by GPM. Selecting the alert automatically navigates the user to physical location within the organization.

Environmental Alarm Thresholds Set per power strip

Current, voltage and temperature thresholds can be set for every circuit in your data center. Based on thresholds and trap settings NOC personnel can be notified via e-mail when circuits reach capacity.

System Requirements:

Win98™, NT™, 2000™, PentiumII or higher, 128MB Ram
800x600 Screen Resolution