

Addendum to Owners Manual

TX-V44 4-PORT SELECTABLE EIA-232/EIA-422 I/O MODULE FOR TELPLEX STATISTICAL MULTIPLEXERS: INTERFACE, INTERFACE SELECTION, AND CABLING

The V44 has four selectable EIA-232/EIA-422 serial ports. Operation and configuration are the same as described for the TX-V43 I/O module in the Telplex Operator's Manual except the TX-V44 does not support RTS/DSR Pass Through.

INTERFACE

Asynchronous EIA-232, -12v mark, +12v space or EIA-422 0 to +5 volt differential TX+, TX-, RX+, RX-

INTERFACE SELECTION

The desired V44 serial interface is selected by positioning jumpers on the main board of the module for each individual port. You can also supply external power to a remote BayTech Tran-x SP-01 or SP-02 high speed serial to parallel converter by positioning a jumper on the V44 module. The factory default serial interface is EIA-422 and +12V external power is disabled for all ports. If you wish to change one or more of the ports to operate using a different serial interface or supply +12V to a remote Tran-x, use the following procedure:

- a. **IMPORTANT:** If the V44 module is installed in the base unit chassis, remove power from the unit by positioning the On/Off switch to "0" (off) and unplugging the power cord from the AC outlet. Remove the module by unscrewing the two screws securing it to the back panel and pulling the module out.
- b. Refer to *Figure 1* below and locate the four nine-position jumper locations for serial interface selection. These jumper locations are marked on the assembly drawing as *JP5* for Port 1, *JP6* for Port 2, *JP7* for Port 3, and *JP8* for Port 4. If enabling +12V external power, locate the four three-position jumper locations for external power. These jumper locations are marked as *JP9* for Port 1, *JP10* for Port 2, *JP11* for Port 3, and *JP12* for Port 4.
- c. Each port is configurable for EIA-422 or EIA-232 serial interface by installing a six-position jumper to either the *422* or *232* position as marked on the board. The center row of pins for each port is occupied by three of the jumper positions and the row of pins for either *422* or *232* is occupied by the other three positions of this jumper. External power is enabled by installing a two-position jumper that connects the *+12* pin and the center pin of the jumper location for the desired port(s).
- d. Install the V44 module into the base unit chassis.

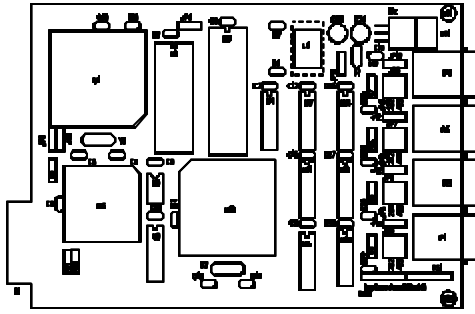


Figure 1: V75 Main Board Mechanical Layout

CABLING INFORMATION

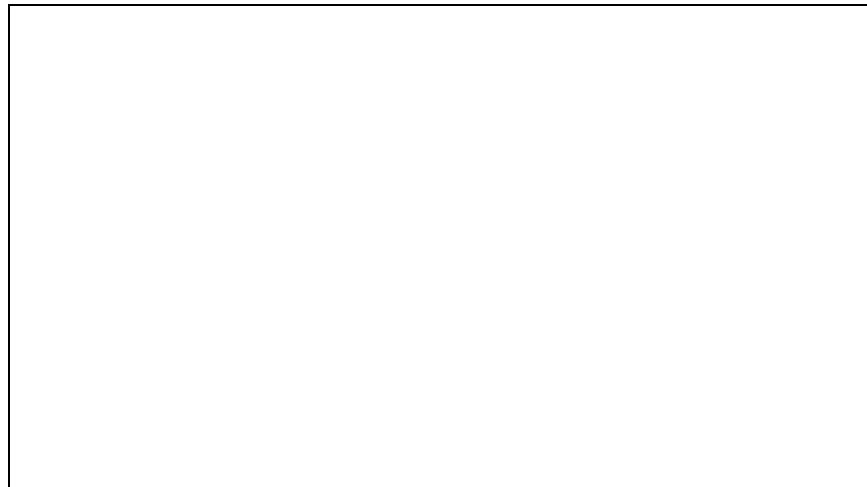
Ports on the V44 module use the following pins and signals for communication:

V44 PINOUT INFORMATION					
PIN	SERIAL INTERFACE		DIRECTION	DESCRIPTION	
	EIA-232	EIA-422			
1	DTR	HSO	Output	232 - Data Terminal Ready 422 - Handshake Out	Used to enable or disable the receiving of characters
2	GND	GND	----	Signal Ground	
3	NC	TX+	Output	232 - No connection 422 - Transmit Data (+)	
4	TX	TX-	Output	232 - Transmit Data 422 - Transmit Data (-)	
5	RX	RX-	Input	232 - Receive Data 422 - Receive Data (-)	
6	GND	RX+	----/Input	232 - Signal Ground 422 - Receive Data (+)	
7	GND	GND	----	Signal Ground	
8	CTS	HSI	Input	232 - Clear To Send 422 - Handshake In	Used to enable or disable the transmitting of characters

NOTE: If +12V external power is enabled to supply power to a remote BayTech Tran-x SP-01 or SP-02, +12V is supplied on Pin 1.

EIA-232 CABLING

Refer to the modular adapter drawings below to interface your computers or terminals to the V44 module using EIA-232 serial interface. Refer to *Figure 2* if your computers/terminals have DB-25 male connectors or *Figure 3* if your computers/terminals have DE-9 connectors.



**Figure 2: PC, PS/2 Computer/Terminal Adapter
BayTech Part No. 25FRJ45PC-2**



Figure 3: AT Computer Adapter
BayTech Part No. 9FRJ45PC-2

Refer to *Figure 4* for the adapter required to connect an EIA-232 serial printer to the V44 module.



Figure 4: Printer/Plotter Adapter
BayTech Part No. 25MRJ45PR-2

IMPORTANT: When modular adapters are used as shown in *Figures 2 - 4*, crossed 8-wire modular cables are required. Do not use 4-wire modular cabling. Please see *Figure 5* below.

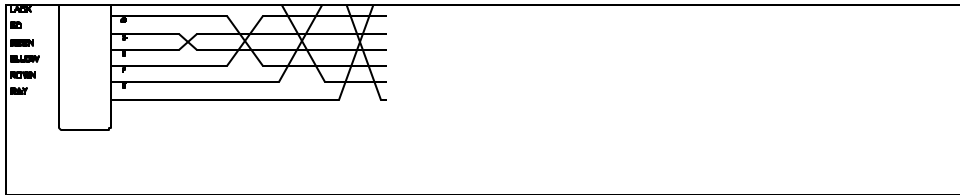


Figure 5: Crossed RJ-45 Cable
BayTech Part No. RJ08X010 (10 feet)

EIA-422 CABLING

The cable required to connect an EIA-422 device to the V44 module using EIA-422 serial interface must have TX+ wired to RX+ (and vice versa), TX- wired to RX- (and vice versa), HSO wired to HSI (and vice versa), and the grounds connected. Please see *Figure 6*.

V44 (EIA-422) RJ-45	Equipment Connections
1 HSO	HSI
2 GND	GND
3 TX+	RX+
4 TX-	RX-
5 RX-	TX-
6 RX+	TX+
7 GND	GND
8 HSI	HSO

Figure 6: V44 EIA-422 Connection

NOTE: The *HSO*, *HSI*, and *GND* signals do not need to be connected if you are not using hardware handshake lines.