

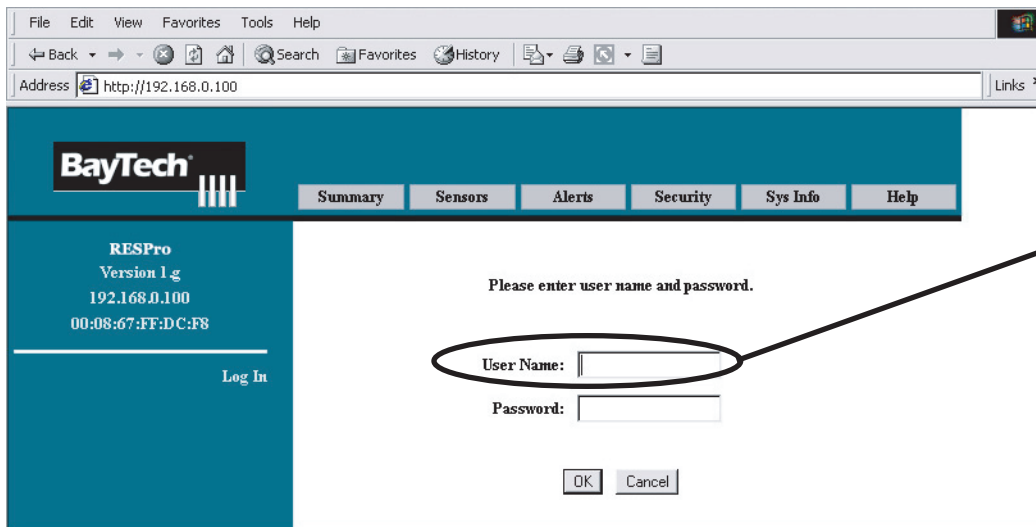
RESPro Quick Start Guide

Before you start you should have the following:

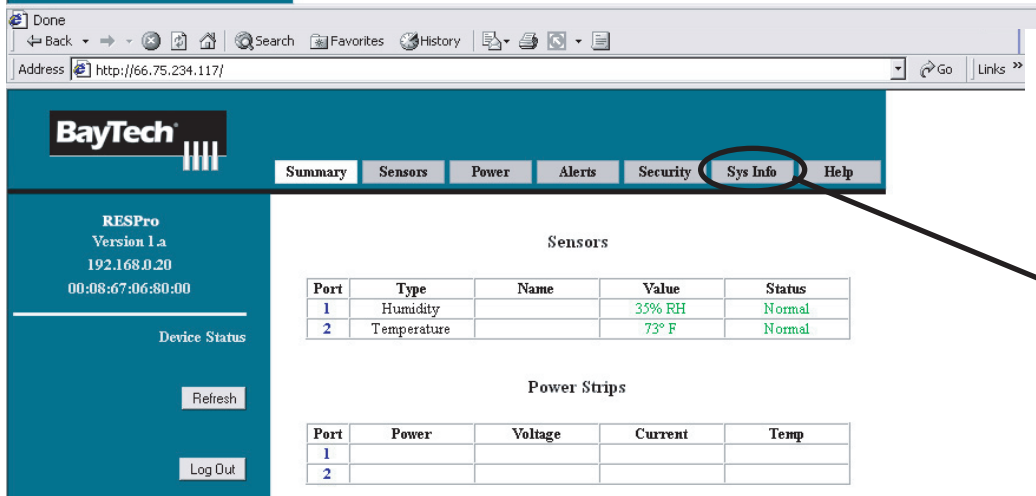
- RESPro SNMP server(supplied)
- 12V/800mA DC Adapter(supplied)
- RESPro Sensors (supplied)
- Ethernet Cable
- Web Browser (Netscape Navigator v 4.0 and up, or Microsoft Internet Explorer v4.0 and up)
- One available Ethernet Port (on a 192.168 subnet*)

1. Plug in Power and Sensors

- Plug in the DC Power Adapter to the DC Power Port of the RESPro. The red power light should be on.
- Plug your Ethernet cable's RJ45 jack into the ethernet port of the RESPro. The Ethernet Port is a standalone jack. The green link light should now be on.
- Plug in the sensors to their respective locations. (For more help go to our online Simple Setup)



This is your Login screen. In order to Login and setup your RESPro please enter in the "User Name" field: "admin". There is no password and this will allow you to edit your RESPro's set up.



You are now looking at the Summary View. It is being generated by your RESPro!

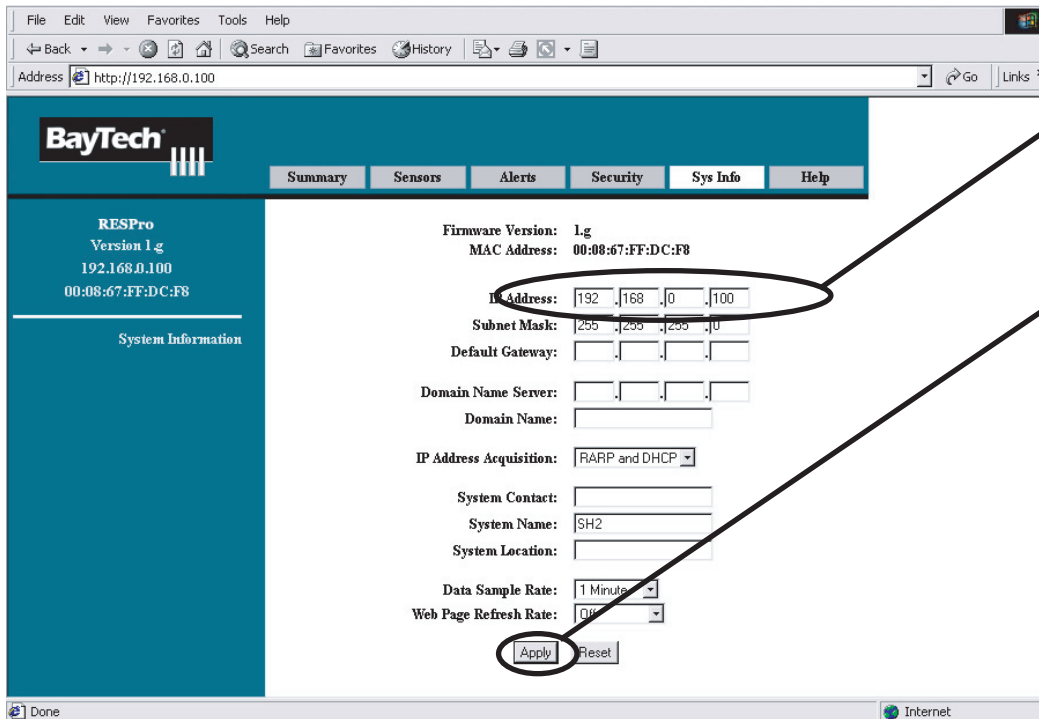
Press the "Sys Info" button on the RESPro's Menu Bar.



*Note: If you are unable to see the browser or do not have a 192.168 subnet you may also use the ARP method to set the IP address. At the C prompt type in C:\-s xx.xx.xx.xx 00-10-8B-f1-qq-qq (xx is your new IP address and qq is the remaining part of the MAC address on the bottom of the unit.) Now press return. Ping the unit at the C prompt c:\ping xx.xx.xx.xx (xx is your new IP address.) Now you should be able to enter your new IP address and see the unit in your browser. Additionally, you may use the IP set program which is included on the *Documentation and Utilities CD* or for more information regarding additional sensor set-up, E-mail, SNMP Traps, and NNM integration please refer to our website at www.baytech.net. Here you will find our FAQ online, Help Topics, product manuals and Quick start guides.

2. Set Up the RESPro's IP Address

A. In your web browser address line type in the RESPro's default IP address 192.168.0.100 and press return on your keyboard:



1. In the line labeled "Host IP" enter the static IP address you have selected for your RESPro.
2. Press the **Apply** button.
3. *(Important: after entering any changes to ANY line, you must press the **Apply** button to transfer the changes to the RESPro. Failure to do so will result in no changes or updates being made.*