

## DS62-MD4 Reset procedure

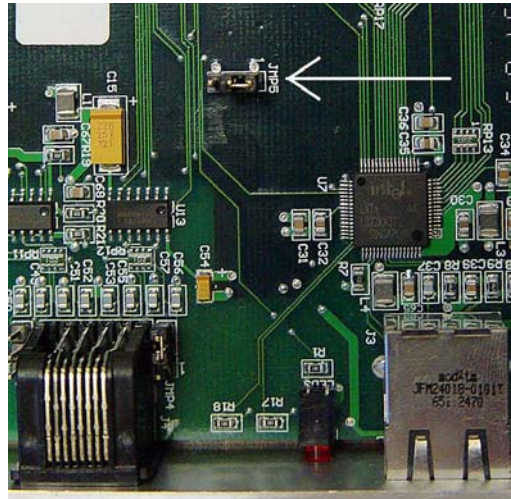


Figure 1  
DS62 similar to DS62-MD4

**IMPORTANT:** This procedure will reset configuration to factory default.

### DS62:

1. Remove the module from the chassis (with the unit powered down).
2. Hold the module with the chip side up and the faceplate towards you.
3. Locate jumper JMP5 approximate center of circuit board.
4. Move the jumper from pins 1 and 2 to pins 2 and 3.
5. Put the module back in the chassis and power up for 15 seconds.
6. Take the module back out and replace the jumper to the original position.

The module is now reset to factory default.

**Note:** If the module appears not to have reset or opening menu has random characters in it, perform the reset procedure again except increase the reset time from 15 to 30 seconds.