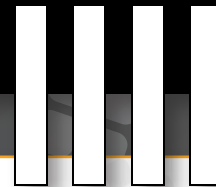




# BayTech®



## **BAYTECH OFFERINGS:**

BayTech Remote Site Management (RSM) solutions cater specifically to applications that require monitoring and control of IT equipment from anywhere. Features including receptacle level power cycling, true RMS Current and Voltage measurement, Kilowatt hour metering, real time power factor, temperature and humidity monitoring, and SNMP reporting provide remote access and control for remote IT equipment.

## **IMAGINE...**

- ...responding to network and server problems in minutes instead of hours or even days.
- ...immediately knowing when circuits are overloaded.
- ...continuous monitoring temperature and humidity of critical datacenter assets.
- ...reducing network downtime and the high cost of service calls.
- ...having the ability to reboot locked equipment anytime from anywhere.

## **WHO USES BAYTECH EQUIPMENT?**

IT and datacenter managers who know how critical it is to maintain service availability. The nation's top ISPs, corporations, and IDC providers trust and depend on the reliable and feature rich equipment that BayTech offers.



## MODULAR PRODUCT OVERVIEW

### Fixed Receptacle Power Strip Configurations are History

BayTech's modular power strip provides a unique framework for building rack PDUs. Unlike fixed receptacle configurations, BayTech's modular approach provides a system of modules used at the time of manufacturing to configure your power strip to the exact receptacle mix for your application.

BayTech manufactures four series of modular systems which can be receptacle and power configured endless ways utilizing the modular approach.

### Light Weight Aluminum Chassis



Aluminum is 60% lighter than steel, conducts heat 5 times better and is a superior electrical Grounding conductor.

Independent studies show BayTech's aluminum chassis run 15-20c cooler as compared to competitive steel models. It is also less expensive to ship aluminum products.

BayTech power products define **ACCURACY AND RELIABILITY.**

Subscribing to the proven concept "**BETTER PARTS MAKE BETTER PRODUCTS**" and delivering proven accuracy to the tenth of an Amp, full scale.

BayTech's robust design provides modularity and locking aids on all power and data connections.

### MMP Remote Outlet Control/Metering

The MMP model meters and controls outlets at the outlet level. Metering includes AMPs, Voltage, Active and Apparent Power and Power Factor. The MMP also maintains a kWh meter for each outlet. This model is also available without the controlled outlet feature.

### MRP Remote Outlet Control

The MRP model meters to the branch circuit level and controls outlets. Metering includes AMPs, Voltage, Active and Apparent Power and Power Factor.

### MSP Remote Circuit Metering

The MSP model meters to the branch circuit and input level. Metering includes AMPs, Voltage, Active and Apparent Power and Power Factor.

### MDP Power Distribution

The MDP model is non-metered and delivers power reliably to power outlets.





**LCD Display** - Easily monitor input power as well as branch circuit power utilizing BayTech's easy to read color display. Display turns red if alarm condition exists.



**Locking Receptacles** - Secure your assets with integrated Locking C13 receptacles.



**Sensor Ports** - Monitor environmental conditions with two built-in sensor ports. Standard sensors include Temperature and Humidity.



**Secure Connections** - All internal connections are secured with locking aids. Power connections utilize a lock washer as well as a nylon locknut.



**PCB Mounted Receptacles** - Receptacles are securely mounted to a PCB. This has proven to be much more reliable than ISD's (Insulation Displacement) and hand soldered wires.

### Power Reporting

- True RMS Current in Amps
- Apparent and Active Power
- Power Factor
- Kilowatt Hour Meter
- Accuracy +/-1.5 % Full Scale

### Network Interface

- HTTP/HTTPS
- SNMP V2/V3 Reporting
- IPV6 compatible
- Tacacs and Radius Authentication
- Daisy Chain up to 4 power strips



The modular concept provides a flexible framework for receptacle configuration. With our new IEC and NEMA module (left) we are able to balance NEMA 120VAC loads on three phase power systems.





## Redundant Power Source Option for Single Phase Products

Re-think your equipment power redundancy with BayTech's redundant power option for single-phase modular power strips.

Power, KW usage remains the number one concern for today's computing environment. While dual power supplies provide redundancy they also use considerably more power.

Reduce PUE and get the safety of redundancy for single power supply equipment utilizing BayTech's redundant power option. BayTech's power solutions also provide an integrated kilowatt-hour meter calculating actual power usage over time.

- Transfer time under 15ms
- Single phase solutions up to 32 amps
- Integrated back feed protection
- Robust design with heavy duty 50 amp relays
- Available for MMP, MRP and MSP products

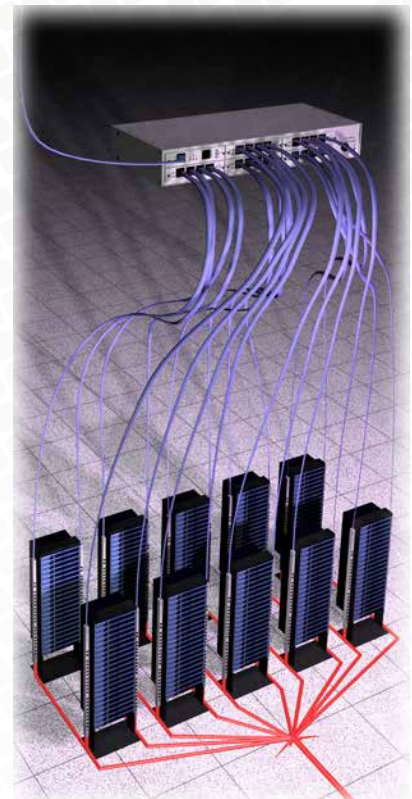


## One IP - 32 Managed Power Strips

Save infrastructure cost when using the DS-Series controller to communicate with up to 32 managed power strips.

Baytech's DS-Series controller connects via the managed power strips serial port eliminating the need to purchase managed power with Direct IP. This also reduces the infrastructure requirements associated with supporting Direct IP on all managed power strips.

The DS-Series embedded web page provides an overall view of power status and control of power products with receptacle control.



## Branch Office Management in a single unit

Used by the largest retail and financial companies in the world, BayTech's secure remote site manager combines the power of console access and power control in a single unit.

The embedded DS-RPC modem provides dialup access in the event direct IP is not available. Whether you need to simply console in or reboot a locked server the DS-RPC allows you to do this remotely without having to "roll a truck."

